



Standen Way, St Andrews Ridge, SN25 4YF

Offers Over £550,000

richard james



Standen Way

St Andrews Ridge

Freehold | EPC Rating - C



A simply stunning 6 bedroom detached house with off-street parking and a double garage, bought to market with NO ONWARD CHAIN and located in a quiet cul de sac in St Andrews Ridge, North Swindon.

This property is beautifully designed and offers spacious living areas. Having been immaculately kept by the current owners it features high-quality finishes throughout, creating a luxurious and comfortable living environment. Don't miss the opportunity to make this your dream home.

On entry to the home you are greeted by a spacious hall leading to a the lounge, conservatory, cloakroom, dining room and kitchen with the added bonus of a separate utility.

To the first floor you'll find the family bathroom and four good size bedrooms, three of which benefiting from built in wardrobes, with the master boasting a modern en-suite shower room.

Since moving in the sellers have converted the loft space to create an additional two bedrooms, which are currently dressed as offices.





Externally the rear garden is a non-overlooked and has been mostly laid to lawn with a patio, decking and pond also.

The local area is fantastic for families, in the catchment for local schools and surrounded by walkways and parks, it's ideally placed.

Call now to arrange your viewing!

EPC: C
COUNCIL TAX: F





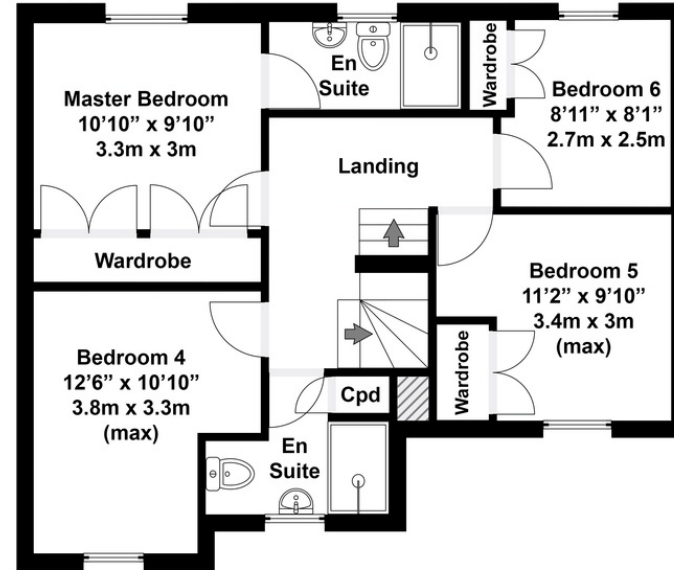
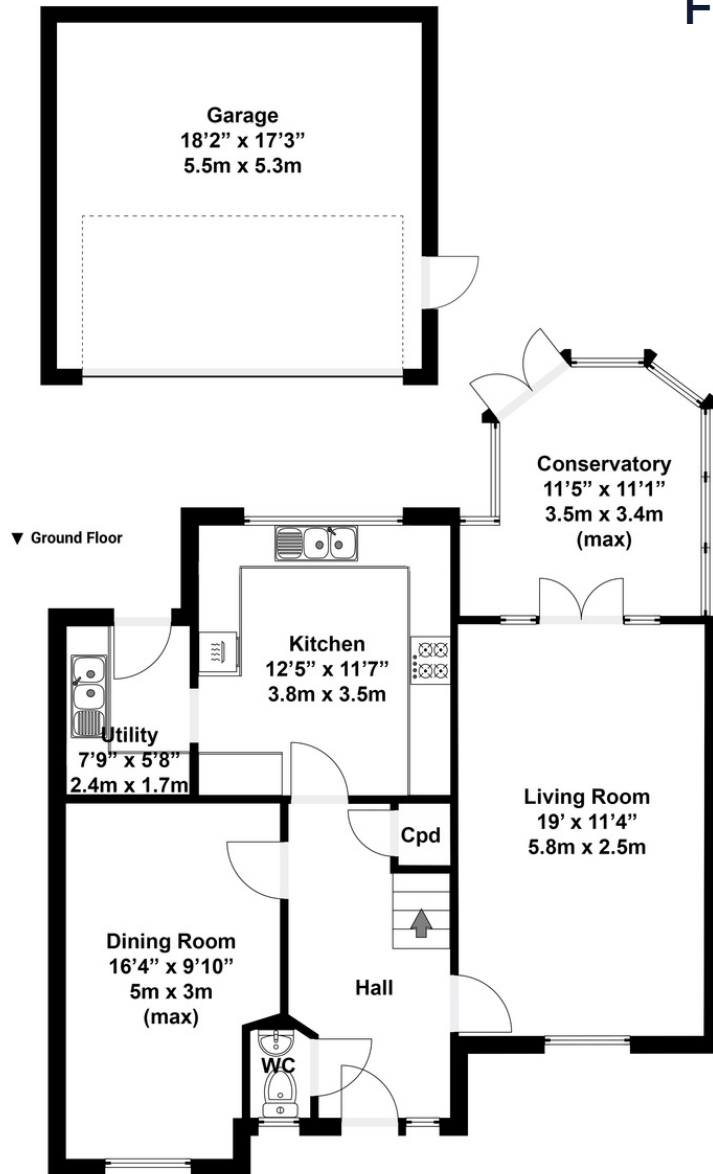




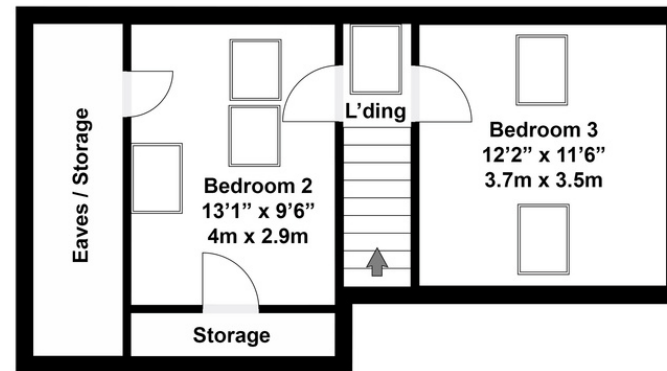


Floorplan

▼ 1st Floor



▼ 2nd Floor



Total area approx: 2085 sq ft / 194 sq m
(Includes garage)

N.B. Whilst care has been taken with this floor plan to reflect an accurate likeness of the property it should only be used as an approximation for illustrative purposes only, specifically no guarantee is given and all should not be relied on solely as a basis of valuation. Plan not to scale.

01793 261 262

northswindon@richardjames.uk

Gemini House | Hargreaves Road | Swindon | SN25 5AZ

richard james

richardjames.uk