



Burne Jones Avenue, Tadpole Garden Village, SN25 2QG

**Asking Price £335,000**

**richard james**





## Burne Jones Avenue

### Tadpole Garden Village

Freehold | EPC Rating - B



- THREE BEDROOM SEMI DETACHED
- GARAGE AND DRIVEWAY TO SIDE
  - EN SUITE TO MASTER
  - BEAUTIFULLY PRESENTED
- LARGER THAN AVERAGE GARDEN

A stunning three bedroom end of terrace home located in the sought after development of Tadpole Garden Village.

This home has been tastefully modernised by the current owners and benefits from a larger than average garden, spacious lounge/ diner, en-suite, walk in wardrobe and a garage with driveway parking to the side.

On entering the home, you are greeted with a bright and airy entrance hall, WC, kitchen and large lounge diner. French doors provide access to the large rear garden which has been beautifully landscaped.

Upstairs you'll find the family bathroom and three bedrooms, all of which a good size with the master boasting the additional luxury of an en-suite shower room and walk in wardrobe.





A garage and large driveway for 2-3 vehicles complete this fantastic home.  
Call now to arrange your viewing.



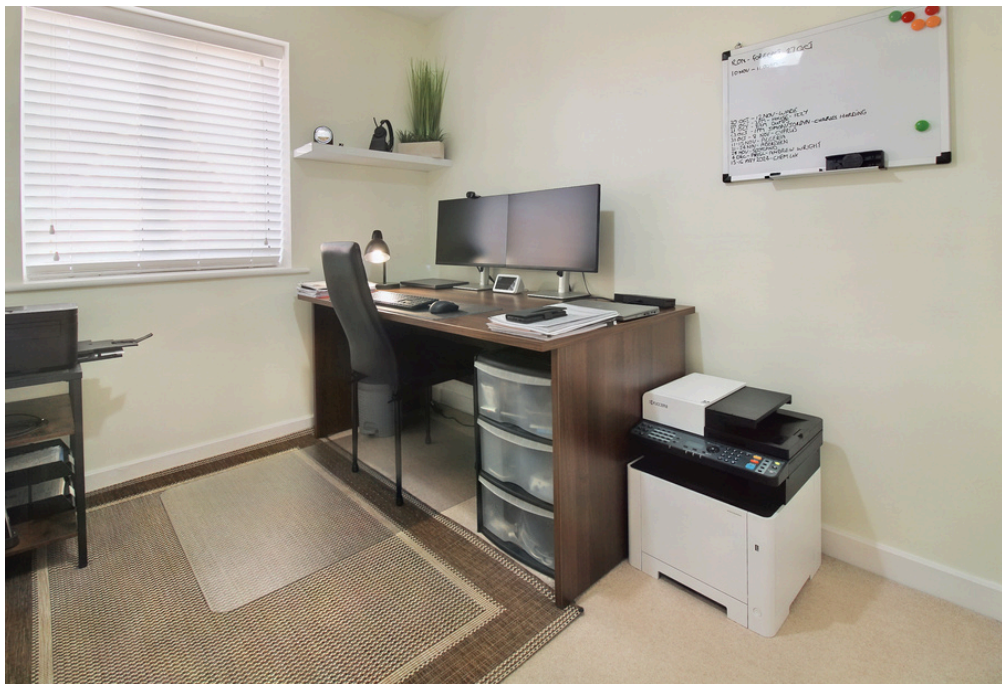






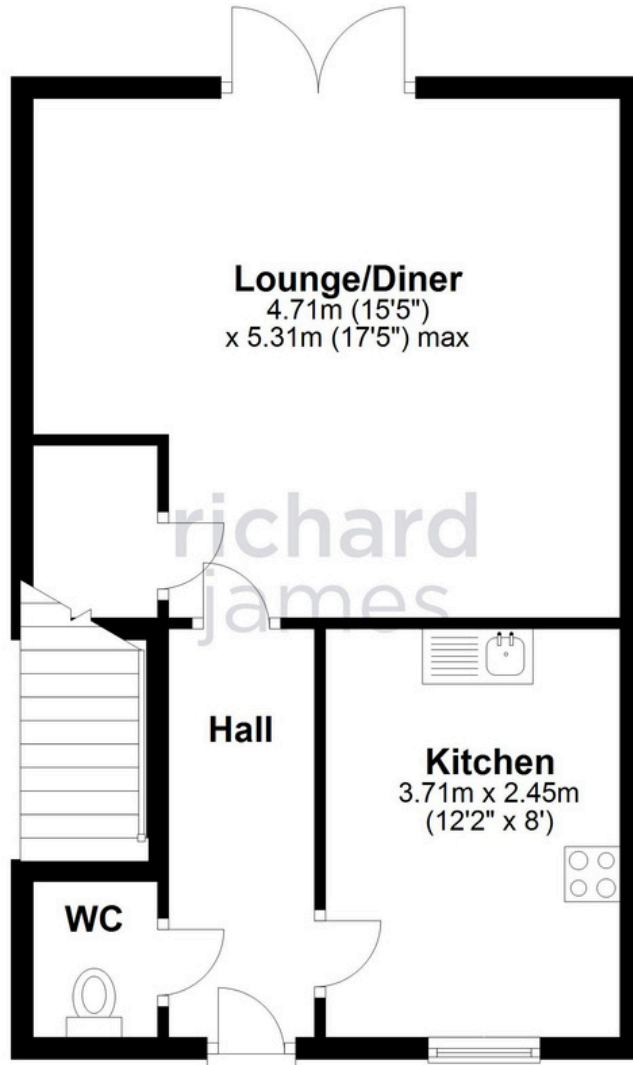






## Ground Floor

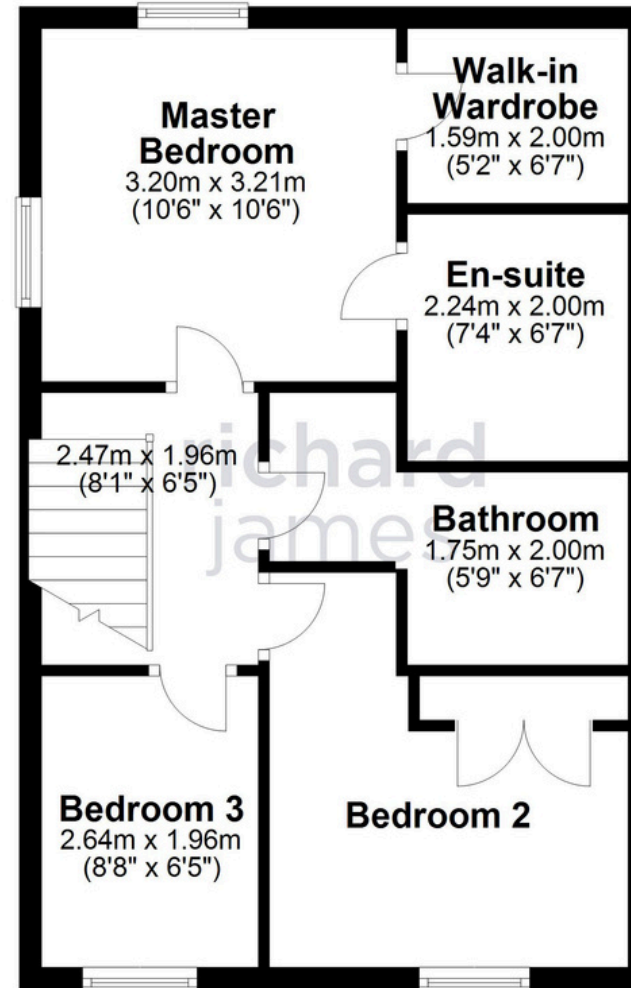
Approx. 42.3 sq. metres (455.2 sq. feet)



## Floorplan

## First Floor

Approx. 45.2 sq. metres (486.7 sq. feet)



Total area: approx. 87.5 sq. metres (941.9 sq. feet)

**01793 261 262**

northswindon@richardjames.uk

Gemini House | Hargreaves Road | Swindon | SN25 5AZ

**richard james**

richardjames.uk