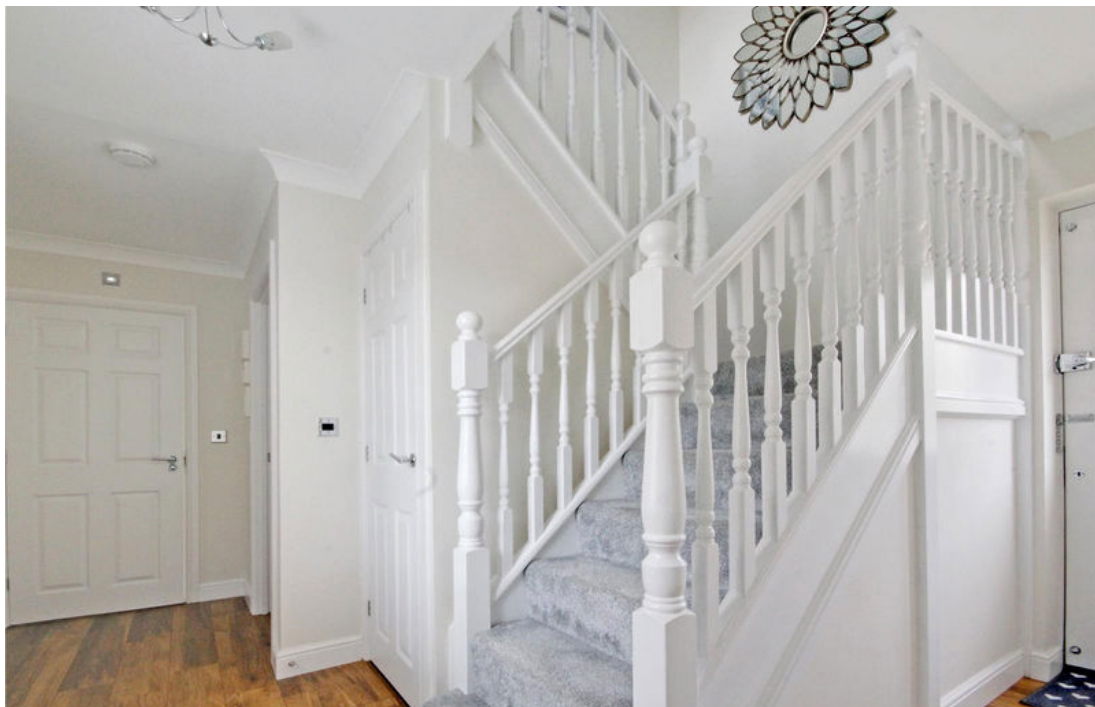




Millgrove Street, Redhouse, SN25 2FW

Offers Over £350,000

richard james



Millgrove Street

Redhouse

Freehold | EPC Rating - C



Located in the heart of Redhouse, a popular residential area in North Swindon sits this substantial four bedroom detached home. This modern, purpose built location benefits from its own local amenities such as the Orbital retail park, reputable schooling and great transport links to the A419 and M4. This impeccably presented property would be ideal for a family due to its excellent location, modern features and four good sized bedrooms.

The ground floor living accommodation comprises; Entrance hall, a bay window fronted living room, dining room, W.C and a newly re-fitted kitchen/breakfast room.

The first floor offers; first floor landing, a spacious master bedroom with en-suite, three further bedrooms plus a family bathroom.

There is an enclosed and well landscaped rear garden with a patio area and lawn, leading onto the homes garage and parking space.





A home of this size in this location won't stay around for long.
Call now to arrange your viewing!

EPC: C
COUNCIL TAX: E

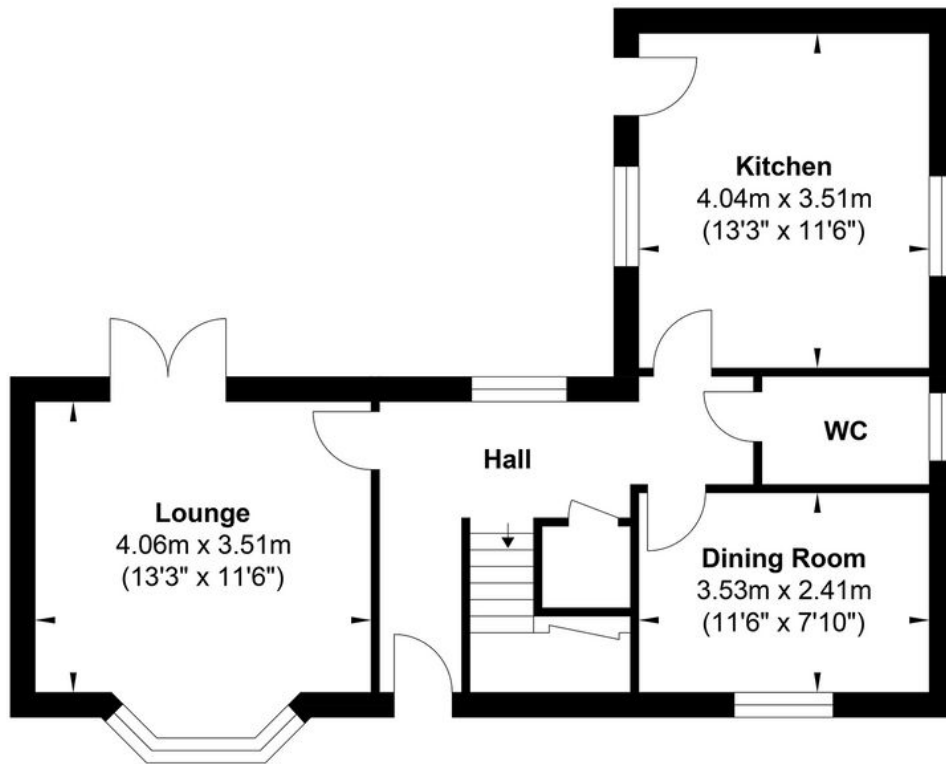




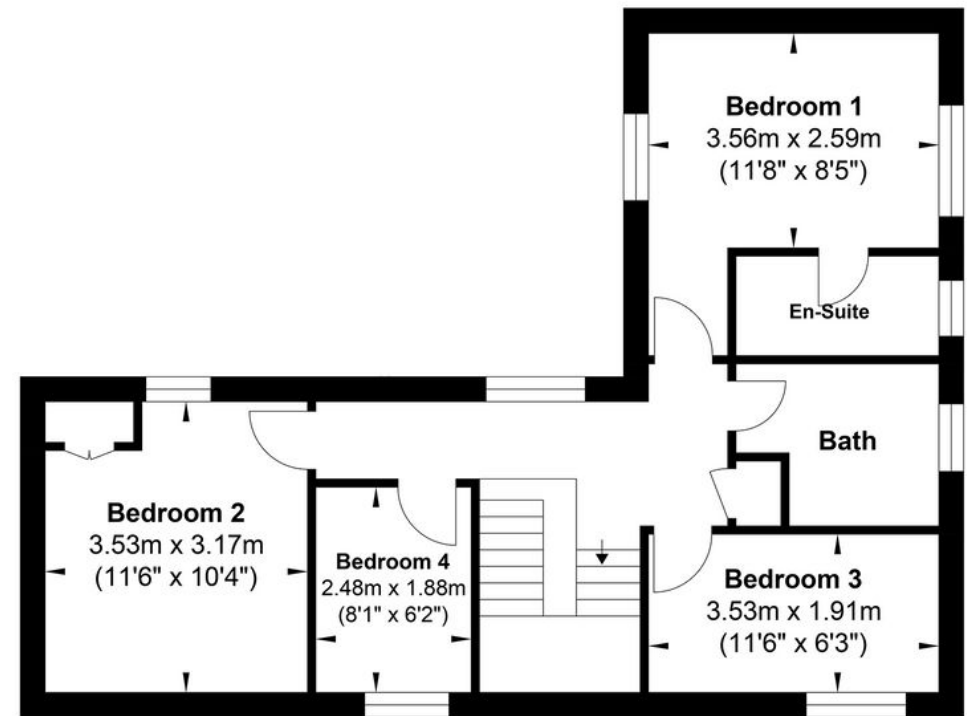




Floorplan



Ground Floor



First Floor

All measurements are approximate and for display purposes only

01793 261 262

northswindon@richardjames.uk

Gemini House | Hargreaves Road | Swindon | SN25 5AZ

richard james

richardjames.uk