



Wingfield, Stratton, SN3 4UR

offers over **£390,000**

**richard
james**



* energy efficiency
rating

D

- SOUGHT AFTER LOCATION - WELL PRESENTED - DETACHED - EXTENDED - CONSERVATORY - GARAGE - LARGE GARDEN - MUST BE VIEWED -

Offered to the market in the much sought after cul-de-sac location of the popular development of Kingsdown Park is this very well presented and extended four bedroom detached family home.

The ground floor comprises: large entrance hallway, cloakroom, fantastic size lounge, separate dining room, kitchen and conservatory. Upstairs you will find a great size master bedroom and three further good sized bedrooms two with built-in wardrobes and family bathroom. Externally there is a large garden to the rear and driveway parking to the front. There is an integral garage with power and lighting. The property further benefits from gas central heating and double glazing throughout. An internal viewing is highly recommended to appreciate the space on offer.

•



exceptional service

Our team will guide you through the process of buying or selling your home.

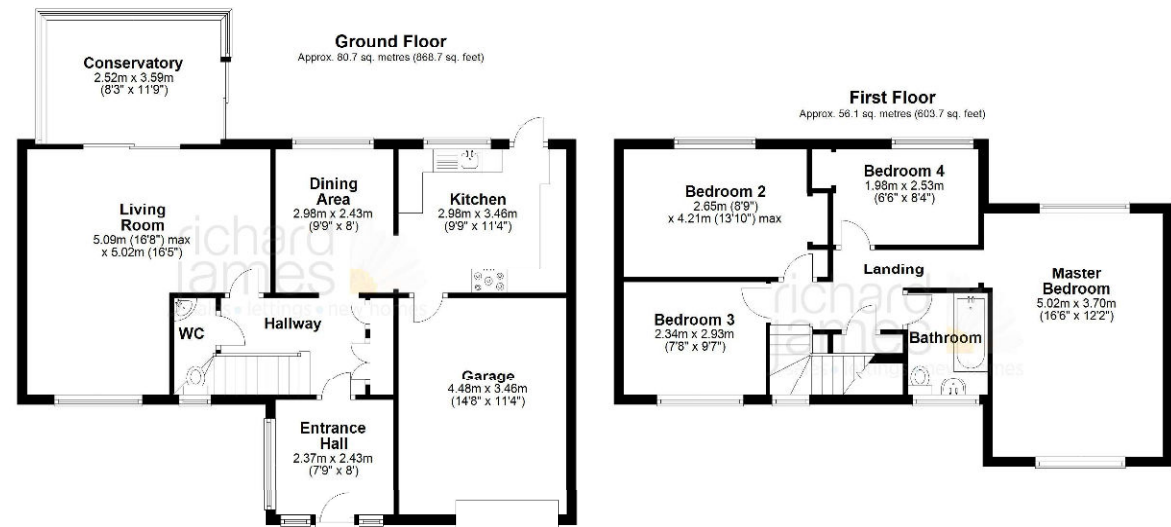
We have a team of dedicated sales progressors in place to ensure your purchase or sale runs smoothly through to completion, keeping you in the loop and a close eye on your chain while moving you in as swiftly and smoothly as possible.

- Honest valuations in current market conditions
- Dedicated sales progression team
- Recommended financial advisors
- 5* service from valuation to completion
- Award winning lettings service
- Ahead of the game marketing strategies
- Professional photography
- Social media marketing
- Top listings on Rightmove and Zoopla

call us for a free
valuation on your
property

eastswindon@richardjames.uk

Grange Drive | Stratton | SN3 4LA



Total area: approx. 136.8 sq. metres (1472.4 sq. feet)

Richard James & their clients give notice that:

1. These sales and particulars do not constitute any part of an offer of contract, and are for the guidance of prospective purchasers only and should not be relied on as statements of fact.
2. No representations are made in these particulars as to the condition of the property or as to whether any service or facilities are in good working order.
3. All Measurements are approximate.

rightmove 